



# EMS Data Import

Quick import of your data from files into DBMS tables

## Description

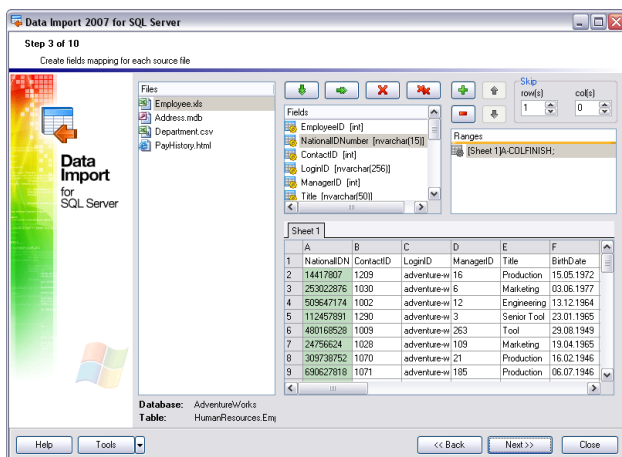
The necessity to import information from different sources (for example, files) into DBMS tables arises quite often when working with tools for database administration. The task may involve importing a large amount of data or performing import operation every hour. And the size of imported data can be so big that it for sure affects the time the import process requires.

EMS Data Import allows you to efficiently import data from most popular formats into database tables on supported DBMS. The utility comes in separate editions for each of the most widely used DBMS servers (SQL Server, ORACLE, MySQL, PostgreSQL, InterBase/Firebird, DB2) and uses native access to the server, which ensures maximum productivity during import process and reduces the time required to import a large amount of information.

EMS Data Import offers a variety of possible settings for the import parameters like import mode, possible transformation of data types during import process, skipping the unnecessary information and many others. All settings can then be saved into a configuration file for future use. The program's interface is intuitive and clean; based on the Wizard system it lends itself to the import task.

The console version of the utility will simplify and automate typical import tasks by calling the program on the schedule to perform import according to predefined settings.

Thus, EMS Data Import will help DBAs to minimize the time required to perform import operations, and if repeated import actions are needed, it will completely automate the whole process.



Adjustable fields mapping for each source file

## Key Advantages

### Import of information from most popular file formats

EMS Data Import supports almost all widespread formats of the source files, which rules out any preliminary conversion hassle. Text files, spreadsheets, local databases, information from web pages – all this can be easily imported into database tables with the help of Data Import.

### Import from several files and/or into several tables simultaneously

EMS Data Import allows setting the import procedure for each file separately. Import into one or several tables, located in one or different databases is also possible.

### High working speed

EMS Data Import is specially optimized to guarantee high import speed. Native access to database server ensures maximum productivity during information transfer and allows you to use the architectural features of the chosen DBMS with maximum efficiency.

### UNICODE support

EMS Data Import supports UNICODE, which allows you to import data stored in different languages without any risks of damaging the information.

### Adjustable import parameters

EMS Data Import provides a number of adjustable import parameters, such as source formats for all fields, destination formats for selected fields, commit options, the number of records to skip and many others. All parameters can be saved in the configuration file and used in future both in the GUI version of the utility and in the console one.

### Console version to automate the import process

EMS Data Import also includes a console version that allows automate the import process; the configuration file (template) for this version is the same as the one for GUI.



# EMS Data Import (continued)

Quick import of your data from files into DBMS tables

## Program features

Program editions for the following DBMS: Oracle, Microsoft SQL Server, MySQL, PostgreSQL, InterBase/Firebird and DB2

Import from 10 most popular formats: MS Excel 97-2007, MS Access, XML, DBF, TXT, CSV, MS Word 2007, OpenDocument Format and HTML

Adjustable import parameters for each source file

Data import into one or several tables in one or several databases

UNICODE support

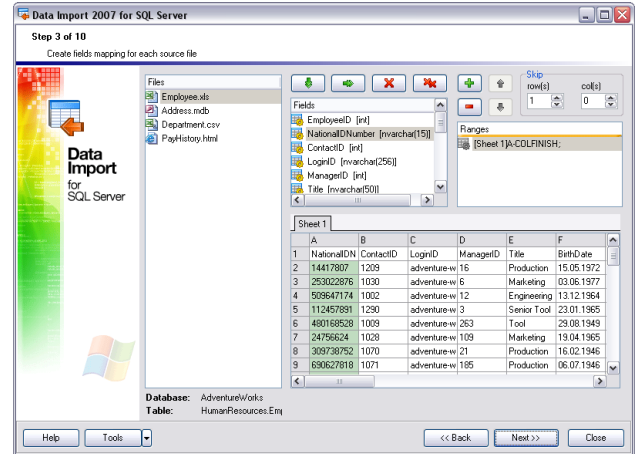
Special batch insert commands and native access to import data at the maximum possible speed.

A number of import modes - Insert All, Insert New, Insert or Update, and others

Saving all import parameters set on current wizard session into configuration file

Secure Shell (SSH) and HTTP tunneling support

Command-line utility to quickly import data using the configuration file



Import from most popular formats: MS Excel 97-2007, MS Access, XML, DBF, TXT, CSV, MS Word 2007, Open Document Format and HTML

## System Requirements

- 300-megahertz (MHz) or higher Pentium II-compatible processor; 600-MHz or faster processor recommended
- Microsoft Windows NT4 with SP4 or later, Microsoft Windows 2000, Microsoft Windows 2000 Server, Microsoft Windows XP, Microsoft Windows 2003 Server, Microsoft Windows Vista
- 64 MB of RAM or more; 128 MB or more recommended
- 20MB of available HD space for program installation
- Super VGA (800x600) or higher-resolution video adapter and monitor; Super VGA (1024x768) or higher-resolution recommended
- Microsoft mouse or compatible pointing device
- Corresponding system libraries or native client to connect to the selected DBMS server

## Contacts

EMS Database Management Solutions, Inc.  
1133 Broadway, suite 706  
New York, NY 10010  
Tel/Fax: 1-646-362-2260  
Toll-free for U.S. & Canada: 1-866-SQL-4-YOU (1-866-775-4968)  
E-mail: sales@sqlmanager.net